



PETRAS
PROPERTY



16 Blakenham Road, London, SW17 8NB £585,000

A charming, immaculately presented two bedroom period house close to both Tooting Broadway and Tooting Bec.

On the ground floor, the house comprises a lovely front reception room which leads through to the eat in kitchen with doors to the well maintained garden. Upstairs, there are two double bedrooms and a bathroom.

The property offers potential to extend to the rear and convert the loft subject to the necessary planning permission.

The house is just a short walk from both Tooting Broadway and Tooting Bec Northern Line Stations. There are a great selection of schools nearby including Hillbrook primary school which is rated Ofstead Outstanding and a fabulous selection of independent bars, restaurants (including the fabulous Tooting Broadway market) and shops can be found along the High Street.

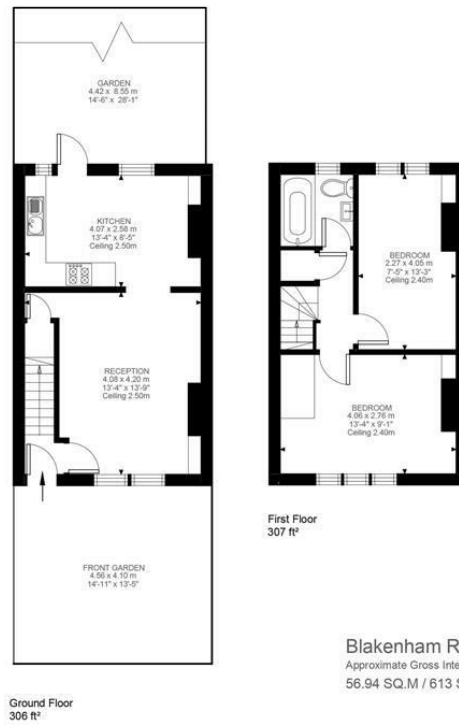


Illustration for identification purposes only. Not to scale.
Floor Plan Drawn According To RICS Guidelines.



Energy Efficiency Rating		Current	Potential
Very energy efficient - lower running costs			
(92 plus) A			85
(81-91) B			
(69-80) C			
(55-68) D			
(39-54) E		50	
(21-38) F			
(1-20) G			
Not energy efficient - higher running costs			
England & Wales		EU Directive 2002/91/EC	
Environmental Impact (CO ₂) Rating		Current	Potential
Very environmentally friendly - lower CO ₂ emissions			
(92 plus) A			
(81-91) B			
(69-80) C			
(55-68) D			
(39-54) E			
(21-38) F			
(1-20) G			
Not environmentally friendly - higher CO ₂ emissions			
England & Wales		EU Directive 2002/91/EC	

These particulars, whilst believed to be accurate are set out as a general outline only for guidance and do not constitute any part of an offer or contract. Intending purchasers should not rely on them as statements of representation of fact, but must satisfy themselves by inspection or otherwise as to their accuracy. No person in this firm's employment has the authority to make or give any representation or warranty in respect of the property.